



# QSLA Training Calendar\*

## Winter-Spring 2019

\*To enroll in these trainings, please do the following:

1. Create an ECE Workforce Registry profile at [www.caregistry.org](http://www.caregistry.org)
2. Be sure you are logged in to the Registry before searching for and enrolling in any trainings.
3. Trainings in **red** can be accessed directly via the red hyperlinks in this calendar and cannot be found via online searches.
4. Trainings in **green** can be found by using the search feature on the ECE Workforce Registry.

# JANUARY

QLSA Training Calendar, Winter-Spring 2019

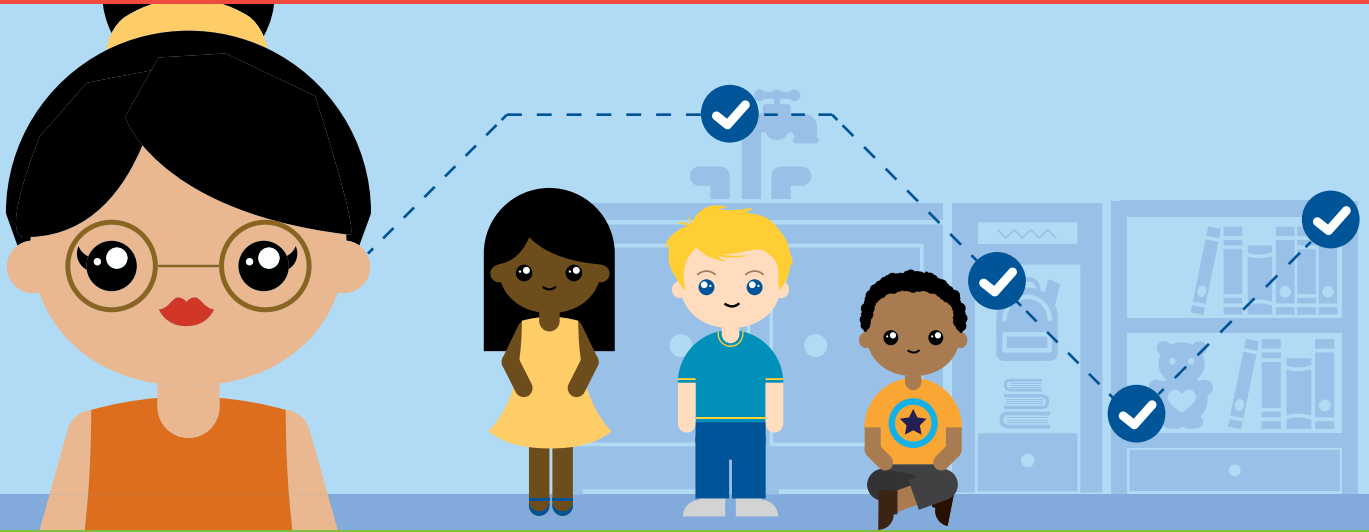


Red trainings: Family Education Train the Trainers | Green trainings: Program Level Trainings

Sunday	Monday	Tuesday	Wednesday	Thursday	Friday	Saturday
		1	2	3	4	5
		New Year's Day				
6	7	<b>Strengthening Families: Protective Factors</b> (Los Angeles)	8	9	10	11
						<b>Permit Clinic</b> (Pasadena) <b>Building Systems for Authentic Family Engagement (ToT)</b> (Monrovia)
13	14	15	16	17	<b>DPH's Healthy Parenting Workshop Series (ToT)</b> (Long Beach)	18
						<b>STEAM: Pre-K</b> (Lancaster)
20	21	22	23	24	25	26
	Martin Luther King Jr. Day					<b>STEAM: Infants / Toddlers</b> (Baldwin Park)
27	28	<b>ITERS-R</b> (Pacoima)	29	30	31	

# FEBRUARY

QSLA Training Calendar, Winter-Spring 2019



Red trainings: Family Education Train the Trainers | Green trainings: Program Level Trainings

Sunday	Monday	Tuesday	Wednesday	Thursday	Friday	Saturday
					1 <b>Supporting Families in the Transition to Kindergarten (ToT)</b> (Los Angeles)	2
3	4 <b>ECERS-R</b> (Lynwood)	5	6	7 <b>Emergency Preparedness</b> (Sherman Oaks)  <b>CLASS: Infants</b> (Los Angeles)	8	9 <b>Cultural Competency</b> (Pasadena)
10	11	12	13	14 Valentine's Day	15	16 <b>Emergency Preparedness</b> (Lynwood)
17	18 President's Day	19	20	21 <b>Positive Parenting and Child Development Workshops (ToT)</b> (Pomona)	22	23
24	25	26	27	28		

# MARCH

QLSA Training Calendar, Winter-Spring 2019

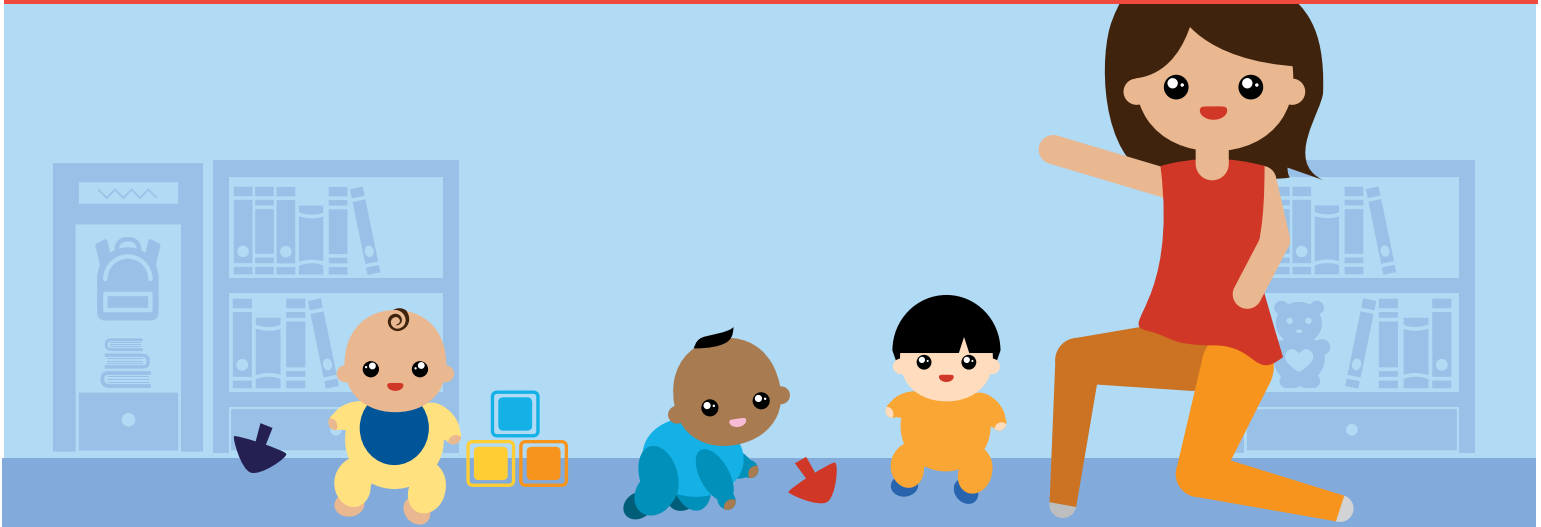


Red trainings: Family Education Train the Trainers | Green trainings: Program Level Trainings

Sunday	Monday	Tuesday	Wednesday	Thursday	Friday	Saturday
					1	2
3	4	<b>CLASS: Toddler</b> (Los Angeles) <b>Building Systems for Authentic Family Engagement (ToT)</b> (Los Angeles)	5	6	<b>DRDP</b> (Pasadena)	7
10	<b>Caring Conversations Café Model (ToT)</b> (Carson)	11	12	13	14	15
17	18	19	20	21	22	<b>Permit Clinic</b> (Pacoima)
24	25	26	27	<b>Emergency Preparedness</b> (Pasadena)	28	29
31						30
Cesar Chavez Day						

# APRIL

QSLA Training Calendar, Winter-Spring 2019



Red trainings: Family Education Train the Trainers | Green trainings: Program Level Trainings

Sunday	Monday	Tuesday	Wednesday	Thursday	Friday	Saturday
	1	2	3	4 <b>Exceptional Populations: Working Families</b> (Baldwin Park)	5	6
7	8 Week of the Young Child	9 <b>Positive Parenting and Child Development Workshops (ToT)</b> (Van Nuys)	10	11 <b>Exceptional Populations: Services for EP</b> (Pasadena)	12	13
14	15	16	17	18 <b>Exceptional Populations: Autism</b> (Lynwood)	19	20
21 Easter	22	23	24	25	26	27 <b>Supporting Families in the Transition to Kindergarten (ToT)</b> (Chatsworth)
28	29	30				

# MAY

## QSLA Training Calendar, Winter-Spring 2019



Red trainings: Family Education Train the Trainers | Green trainings: Program Level Trainings

Sunday	Monday	Tuesday	Wednesday	Thursday	Friday	Saturday
			1	2	3	4
5	6	7	<b>Building Systems for Authentic Family Engagement (ToT)</b> (Pico Rivera)	9	10	<b>Self Care and Wellness</b> (Long Beach)
12	13	14	15	16	17	18
Mother's Day	19	20	<b>DPH's Healthy Parenting Workshop Series (ToT)</b> (Santa Clarita)	22	23	24
26	27	28	29	30	31	
Memorial Day						

# JUNE

## QSLA Training Calendar, Winter-Spring 2019



**Red trainings: Family Education Train the Trainers | Green trainings: Program Level Trainings**

Sunday	Monday	Tuesday	Wednesday	Thursday	Friday	Saturday
						1
2	<b>Positive Parenting and Child Development Workshops (ToT)</b> (Downey)	3	4	5	6	7
9		10	11	12	13	<b>Caring Conversations Café Model (ToT)</b> (Los Angeles)
16		17	18	19	20	21
Father's Day						22
23		24	25	26	27	28
30						29